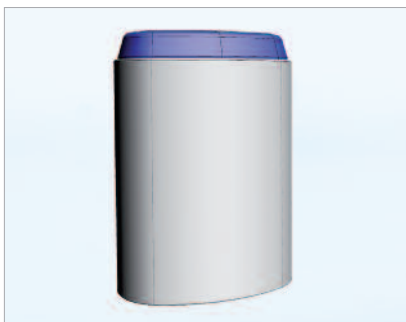
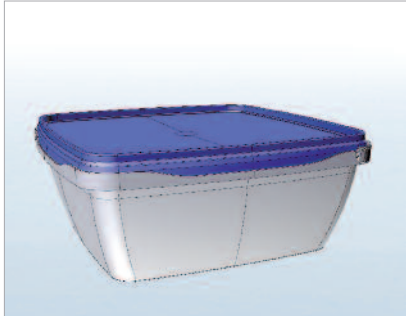


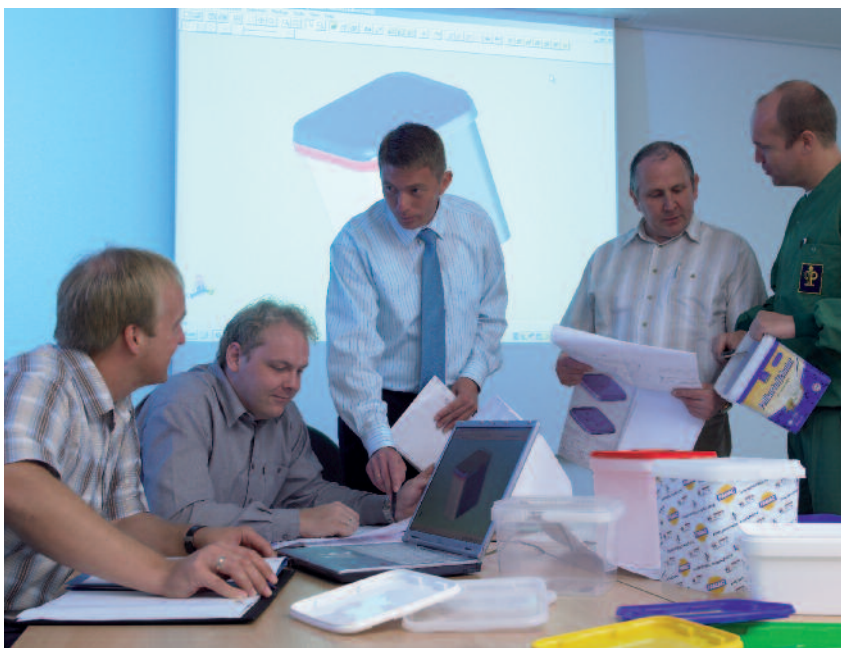
Consistently Implemented Plastics Expertise:  
**From Development to Serial Production.**  
Progress for Your Success – Pöppelmann FAMAC®.



# We Come Directly to the Point: To Your Requirements. **Pöppelmann FAMAC®** – **Your Development Partner** for Technical Functional Components and Modern Packaging.

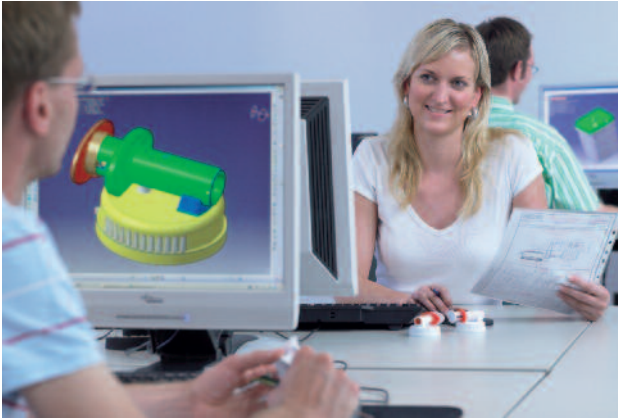
Our development capabilities are in line with the latest products, technologies and the highest market demands. Quality, perfect craftsmanship and high-tech production are the secrets behind our market-leading success.

## [1] Professional and customer-oriented project management.



Short development times, target-oriented product optimization, and safe process planning give you a decisive edge over your competitors. In this way, we have full control of quality and costs – right from the start.

## [2] Modern and Fast CAD-controlled Development Tools.



Virtual product development and optimisation as an efficient key to standard mould design and manufacture.

## [3] Rapid Prototyping.



Thanks to rapid prototyping (SLS/SLA/3D printing), functional samples and prototypes are already available at early stages of development.

## [4] Own Toolmaking Facility for the Highest Precision.



Precision of up to 0.001 mm enables the manufacture of sophisticated plastic parts and ensures trouble-free high-performance production. Our own toolmaking facility guarantees fast response and extreme flexibility when it comes to mould construction, modification and repair.

## [5] Efficient Serial Production.



Consistent quality, high production performance, exemplary cleanliness characterizes our FAMAC® production facility. A modern production facility equipped with injection moulding machines between 250 kN and 13.000 kN, as well as In-Mould-Labeling, stack-moulds, 2-K injection moulding technologies, cleanroom manufacturing, fully automatic assembling and packaging solutions are key features of a reliable serial production.

## A Successful Family-owned Company: Focusing on People.

Pöppelmann – a strong and reliable partner. Since 1949 the family-owned company Pöppelmann with 5 production sites and 450 injection moulding, thermoforming machines and extruders has proved itself to be a leading manufacturer in the plastic processing industry. In more than 70 countries the quality "made by Pöppelmann" is appreciated. More than 1,600 highly qualified employees stand for our success.

Our Pöppelmann FAMAC® business division develops and manufactures technical functional components and packagings for the food, pharmaceutical, cosmetics, and medical industry. To this end, the introduction and implementation of a quality management pursuant to DIN EN ISO 9001:2008 and of a hygiene management systems in accordance with the Codex Alimentarius has been certified by an independent institute.



More than 1,600 Pöppelmann employees stand for productivity, quality and service.



Germany, Plant III:  
Pöppelmann GmbH & Co. KG, Lohne



Germany, Plant I: Pöppelmann GmbH & Co. KG, Kunststoffwerk-Werkzeugbau, Lohne



**PÖPPELMANN**

**FAMAC®**

Pöppelmann GmbH & Co. KG · Kunststoffwerk-Werkzeugbau · Pöppelmannstraße 5 · 49393 Lohne · Germany · Telephone +49 4442 982-3900  
Fax +49 4442 982-417 · famac@poeppelemann.com · www.poeppelemann.com